



**RAPTOR**

## OMER 82P Series Stapler

The 82P stapler drives RAPTOR® 16 gauge, 1/2" crown composite staples from 3/8" through 9/16". It is extremely fast, lightweight, well-balanced and rugged.

It is offered in a standard-length magazine and a long magazine version for operators who prefer less reloading.

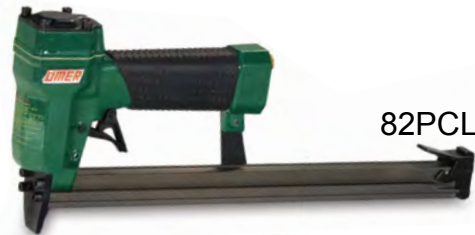
The 82P is also offered with a trigger safety or with a contact trip safety to reduce the possibility of accidental firing.



82P



82PS



82PCL



82PSCL

### TECHNICAL DATA

Model	82P	82PS	82PCL	82PSCL
Magazine capacity	60 staples	60 staples	120 staples	120 staples
Operating air pressure	60 – 90 psi (4 – 6 bar)			
Dimensions LxWxH	8.5" x 1.7" x 5.8" 216 x 43 x 148mm	8.5" x 1.7" x 5.8" 216 x 43 x 148mm	13.8" x 1.7" x 5.8" 350 x 43 x 148mm	13.8" x 1.7" x 5.8" 350 x 43 x 148mm
Weight	1.9 lb (0.9 kg)	1.9 lb (0.9 kg)	2.4 lb (1.1 kg)	2.4 lb (1.1 kg)
Safety	Trigger	Contact	Trigger	Contact

